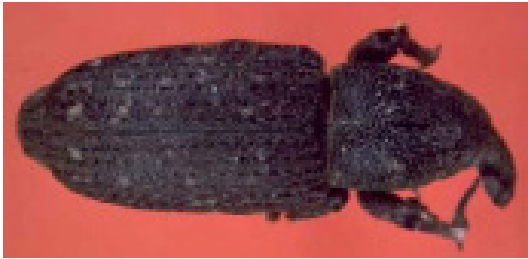


typical adult weevil



Univ. of Georgia

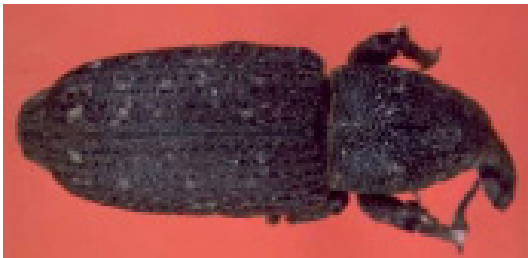


Univ. of Georgia



Univ. of Georgia

typical adult weevil



Univ. of Georgia



Univ. of Georgia



Univ. of Georgia

pales weevil
***Hylobius pales* (Herbst)**

Adult weevils are oblong, robust, black to reddish brown, and about 1/2 inch (12 mm) long. The wing covers have small, scattered patches of yellowish hairs.

Adult weevils feed on the tender bark of seedlings, twigs, or larger trees. Small, irregular feeding patches in the bark are characteristic of weevil damage. Heavy feeding may girdle the stem, causing wilting or death. Feeding below the root collar and on the roots is common.

Adult weevils are attracted by the odor of fresh pine resin, and quickly invade recently logged areas. After mating, eggs are laid in lateral roots of fresh pine stumps. Eggs hatch in approximately 5 to 10 days. Larvae feed on the inner bark tissue of dead roots. Full-grown larvae construct a chip cocoon in the wood and pupate. The time spent in the pupal stage lasts from a few weeks to several months, depending on the temperature. Adult weevils are found year round, usually within flying distance of any pine cutting area. There may be two generations per year.

pales weevil
***Hylobius pales* (Herbst)**

Adult weevils are oblong, robust, black to reddish brown, and about 1/2 inch (12 mm) long. The wing covers have small, scattered patches of yellowish hairs.

Adult weevils feed on the tender bark of seedlings, twigs, or larger trees. Small, irregular feeding patches in the bark are characteristic of weevil damage. Heavy feeding may girdle the stem, causing wilting or death. Feeding below the root collar and on the roots is common.

Adult weevils are attracted by the odor of fresh pine resin, and quickly invade recently logged areas. After mating, eggs are laid in lateral roots of fresh pine stumps. Eggs hatch in approximately 5 to 10 days. Larvae feed on the inner bark tissue of dead roots. Full-grown larvae construct a chip cocoon in the wood and pupate. The time spent in the pupal stage lasts from a few weeks to several months, depending on the temperature. Adult weevils are found year round, usually within flying distance of any pine cutting area. There may be two generations per year.